

## ECT Series Metal two core through hole connector

### PRODUCT MODEL: ECT 3 2 XX X

3:Connector Type:  
3=shield; 5=unshield

2:Number of holes:  
2=two holes

XX:Cable cross-sectional area:  
12=2.5 square 13=4 square  
14=6 square 15=10 square

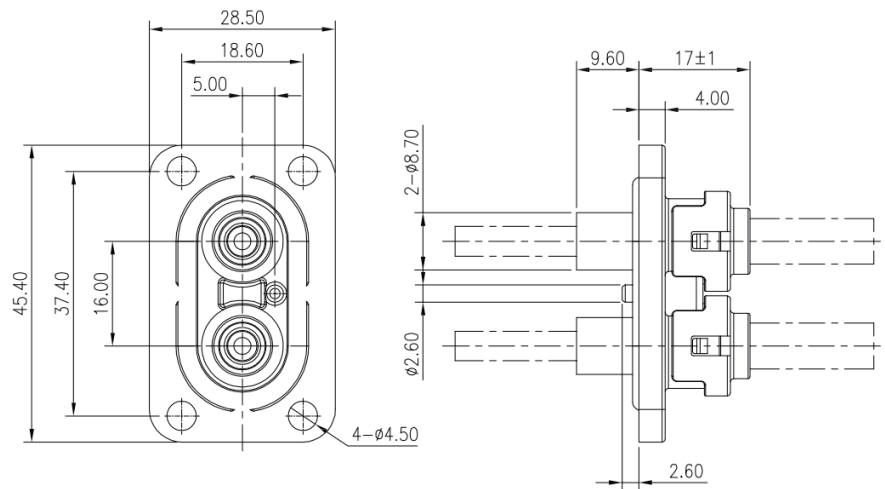
X:Preventing Misinsertion of Key Positions:  
A=A Key B=B Key C=C Key



### Product Performance:

- Wiring scope:  
2.5 to 6mm<sup>2</sup> Shielded cable  
2.5 to 10mm<sup>2</sup> Unshielded cable
- Rated current:  
16A to 35A (Shielded)  
16A to 65A (Unshielded)
- Rated voltage:1000V DC
- Insulation resistance:  
≥200MΩ (DC1000V)
- Withstand voltage:3000V AC
- EMI:360°Shielded
- Salt spray: 48 hour
- IP Grade: IP67(Assembled)
- operation temperature: -40°C to +125°C
- Material of the shell: aluminum alloy
- Flame retardant grade:UL94V-0

### Overall dimensions:



### Panel size:

